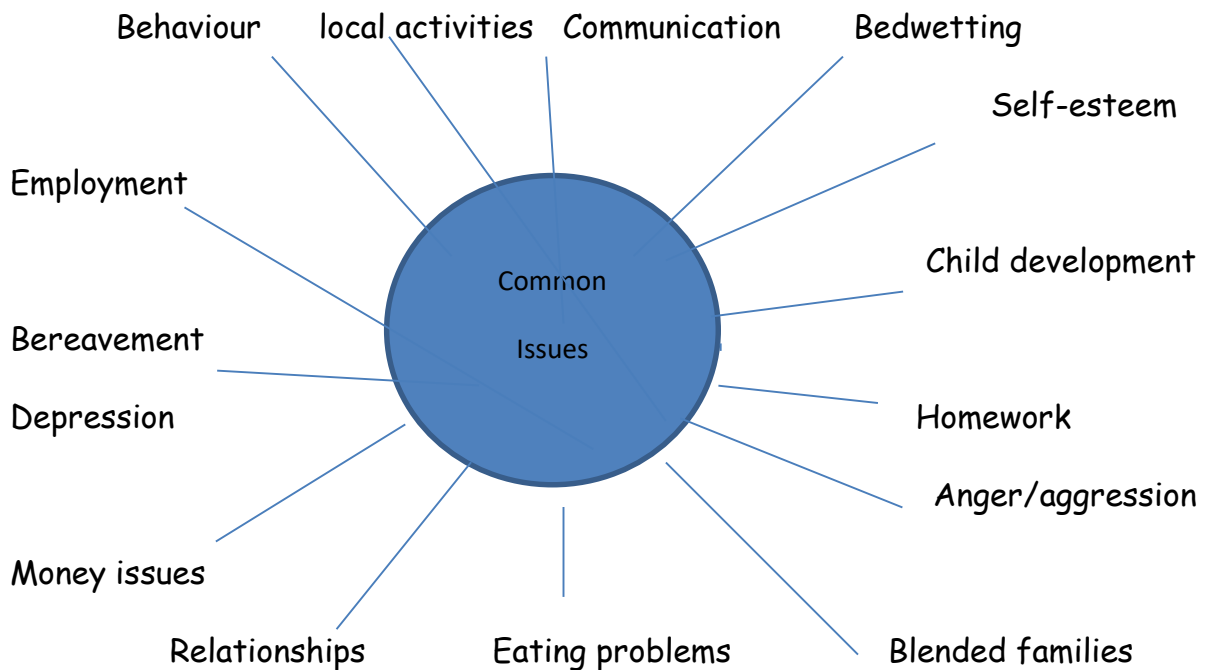


# PARENT SUPPORT ADVISER

My role is to provide support for parents and families. Some of the issues parents want to discuss are;

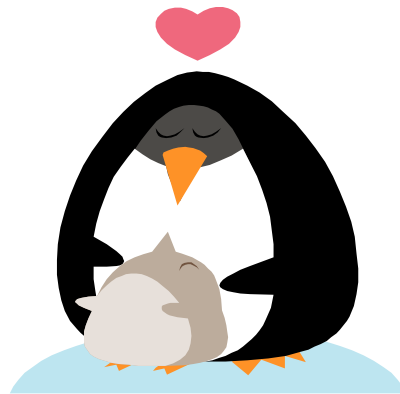


I will be at various school events, such as parent evenings. Any workshops or parenting courses will be shared through the school newsletter .

I can work with families as a 'one off' meeting for a specific issue or become more involved and work with a family until they no longer need my services. I can support throughout a family's school life.

### Services offered;

- 1-to-1 support
- Advice
- Signposting
- Referral to services
- Small group work; working with small groups of parents focusing on specific problems/issues
- Triple P -positive parenting programme, a 6 week course held at the Infant school
- Coffee mornings as opportunities to give opportunities for questions and suggestions



My contact number is **07789480521** .

I am based at Shinfield St Mary's Junior School on Tuesdays and Shinfield Infant and Nursery School on Wednesdays and Thursdays. I can also be contacted via the school receptions. Alternatively you can email me at [lward@shinfield.wokingham.sch.uk](mailto:lward@shinfield.wokingham.sch.uk)